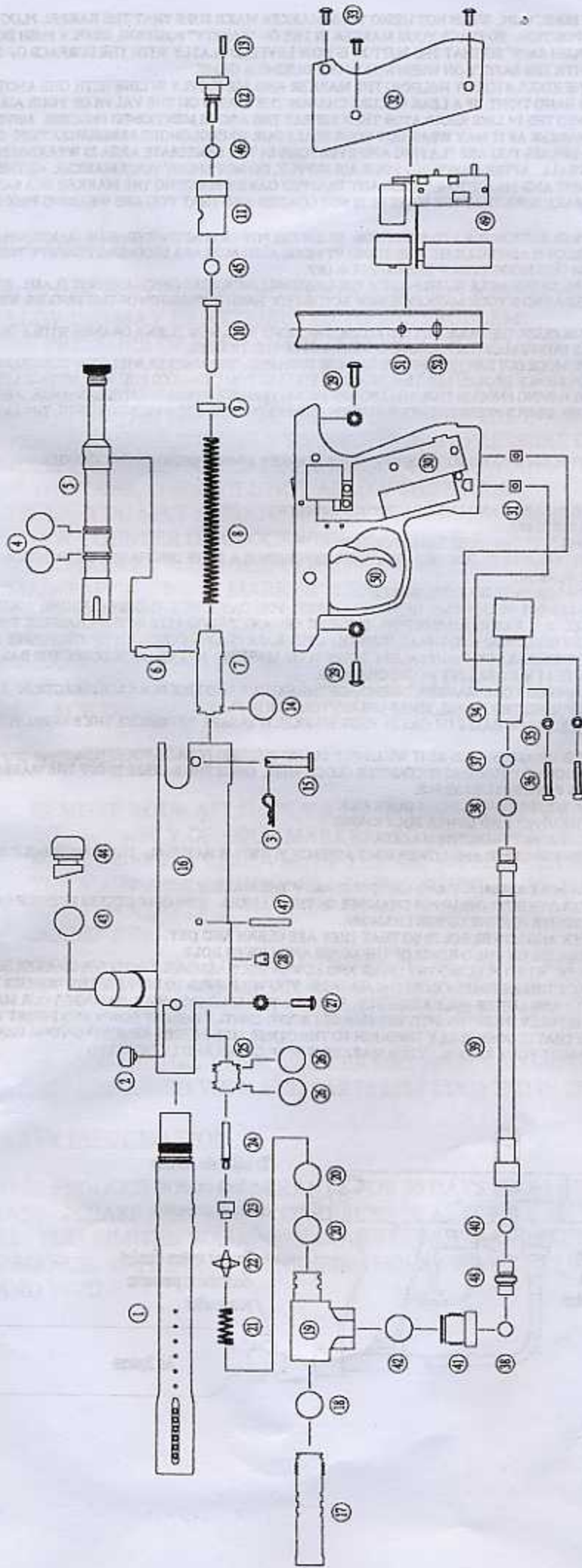


Paradox Electro Exploded View & Parts List



- | | | | | |
|-------------------------------------|------------------------------|-------------------------------------|-------------------------|-------------------------------|
| 1. BARREL | 11. GUIDE PIN FLUG | 21. VALVE PIN SPRING | 31. GRIP FRAME NUTS | 42. GAS GRIP O-RING |
| 2. BALL DETENT | 12. VELOCITY KNOB | 22. VALVE PIN GUIDE | 32. RUBBER GRIP PANELS | 43. BALL STOP O-RING |
| 3. FIELD STRIP PIN LOCK | 13. VELOCITY KNOB SCREW | 23. CUP SEAL | 33. GRIP PANEL SCREWS | 44. BALL STOP |
| 4. UPPER BOLT O-RINGS | 14. LOWER BOLT O-RING | 24. VALVE PIN | 34. BOTTOM LINE ADAPTER | 45. VELOCITY KNOB O-RING |
| 5. UPPER BOLT | 15. FIELD STRIP PIN | 25. VALVE | 35. BOTTOM LINE WASHERS | 46. SPRING GUIDE DISK |
| 6. UPPER & LOWER BOLT CONNECTOR PIN | 16. PARADOX RECEIVER | 26. VALVE O-RINGS | 36. BOTTOM LINE SCREWS | 47. VALVE DOWEL PIN |
| 7. LOWER BOLT | 17. VOLUMIZER | 27. ADAPTER SCREW & WASHER | 37. CO2 FILTER | 48. STRAIGHT MACRO FITTING |
| 8. GUIDE PIN SPRING | 18. VOLUMIZER O-RING | 28. VALVE SCREW | 38. HOSE O-RING | 49. CIRCUIT BOARD |
| 9. GUIDE PIN WASHER | 19. VERTICAL ADAPTER | 29. GRIP FRAME SCREW & WASHER | 39. MACRO LINE | 50. ELECTRONIC DOUBLE TRIGGER |
| 10. GUIDE PIN | 20. VERTICAL ADAPTER O-RINGS | 30. DOUBLE ELECTRONIC TRIGGER FRAME | 40. HOSE WASHER | 51. LED LIGHT |
| | | | 41. GAS THRU GRIP | 52. SWITCH |